



LIVE SHOWS

---

# INFO PACKET



---

## CONTACT

[www.TheDenPDX.com](http://www.TheDenPDX.com)

116 SE Yamhill St. Portland, OR 97217

[Booking@TheDenPDX.com](mailto:Booking@TheDenPDX.com) | [EventSales@TheDenPDX.com](mailto:EventSales@TheDenPDX.com)



*Make yourself at home at The Den.*

The Den is a community event & live music center, featuring live performances, world class sound and atmosphere, and rentable venue space.

Our Core Values (Pillars) are Community, Music, Art, and Hospitality. Our symbol (The Paw) represents a deep love and respect for all who come to experience events at The Den. We are a community-centric space hosting all genres of music, events, art, and gatherings, and are a safe space for expression. We optimistically aim to foster collaboration, prosperity, inspiration, and heart. We are honored to welcome you into our home.

The Den is owned and operated by Wild Animals, LLC and staffed (curated?) with world-class Event Professionals ranging from:

- Event Promoters
- Sound Engineers & AV Technicians
- Internationally Acclaimed DJs, Artists & Designers
- Award Winning Event Managers, and Support Staff including Mixologists, Security, Production, and Box Office staff.

The Den is conveniently located in the SE Industrial Waterfront area of Portland, OR and central to many restaurants, hotels, and area attractions. The space features top of the line sound and lighting equipment, and a rotating selection of local art including BiPoC artists and crafters. The Den is a minority owned business and has been a safe space for our LGBTQ friends since the beginning.

WELCOME IN



# CUSTOMIZED RENTAL PACKAGES

No two shows are exactly the same, but here are some options to help you get started.

---



## Promoter Packages

*Prices vary by day of week, Holiday schedule, and concurrent events*

Starting at \$1,100.00 \*\*

Over 5,000 square feet of flexible event space. Offering set up of our furniture, a House Manager, up to 5 parking spaces, and house sound and lighting options with a full service bar, ticketing, and access to our VIP rooms.

## A la carte | Individual Room Rentals

*Prices vary by day of week and Holiday schedule*

Starting at \$250.00 - add on rooms to your packages

Perfect for customizing your event, adding a VIP or workshop space, or to even increase storage at your event.



## Custom Add-Ons

*Bar | Audio Rigs | Projection | Lighting | Event Staffing*

☑ Contact us for a custom quote

Great for parties with a special kick or tailored brands. Choose from pre-set mobile AV or lighting packages, in house techs, VJ, LDs and more. Customize your order from our full professional suite of Audio Visual Equipment and world class staff.



# TECHNICAL SPECIFICATIONS

## ***Family Room Ballroom:***

### **MAIN PA**

- 4 - L'Acoustics A15 - Passive 15' LF x 3' adjustable waveguide HF - WIDE- TOURING  
[www.l-acoustics.com/products/a15-wide/](http://www.l-acoustics.com/products/a15-wide/)
- 6 - L'Acoustics KS21 - High power compact subwoofer: 1x21"  
[www.l-acoustics.com/products/ks21/](http://www.l-acoustics.com/products/ks21/)
- 1 - LA7-16i  
[www.l-acoustics.com/products/la7-16i#page-1](http://www.l-acoustics.com/products/la7-16i#page-1)

### **DJ MONITOR**

- 2 - x14 HiQ - 2 Way active 15"  
[www.l-acoustics.com/products/x15-hiq/](http://www.l-acoustics.com/products/x15-hiq/)
- 2 - L'Acoustics KS21 - High power compact subwoofer: 1x21"  
[www.l-acoustics.com/products/ks21/](http://www.l-acoustics.com/products/ks21/)

## ***Additional Mobile Rig:***

### **MAIN PA**

- 4 - ES 1.0 - Tops  
[www.kv2audio.com/products/es-serie/es10.html#tab\\_Specifications](http://www.kv2audio.com/products/es-serie/es10.html#tab_Specifications)
- 8 - ES 1.8 - Single 18' Subs  
[www.kv2audio.com/products/es-serie/es18.html#tab\\_Specifications](http://www.kv2audio.com/products/es-serie/es18.html#tab_Specifications)
- 4 - EPAK 2500R - Amplification  
[www.kv2audio.com/products/es-serie/epak2500r.html#tab\\_Specifications](http://www.kv2audio.com/products/es-serie/epak2500r.html#tab_Specifications)

### **DJ MONITOR**

- 2 - ES 1.0 - Tops  
[www.kv2audio.com/products/es-serie/es10.html#tab\\_Specifications](http://www.kv2audio.com/products/es-serie/es10.html#tab_Specifications)
- 2 - ES 2.6 - Dual 15" Subs  
[www.kv2audio.com/products/es-serie/es26.html#tab\\_Specifications](http://www.kv2audio.com/products/es-serie/es26.html#tab_Specifications)
- 2 - EPAK 2500R - Amplification  
[www.kv2audio.com/products/es-serie/epak2500r.html#tab\\_Specifications](http://www.kv2audio.com/products/es-serie/epak2500r.html#tab_Specifications)

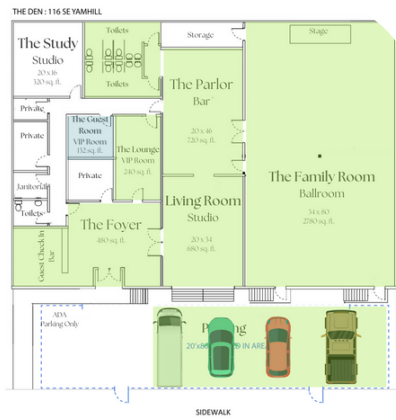
### **FOH**

- MIDAS MR32 LIVE  
[www.midasconsoles.com/product.html?modelCode=PoC7S](http://www.midasconsoles.com/product.html?modelCode=PoC7S)



# PROMOTER PACKAGES

## The Den Package



Suggested for shows of 450 or more anticipated guests. Comes with Sound/Light Engineer, House Manager, Bar Staff, Box Office, Coat Check, Security, L'Acoustics Sound System, Chavet Up lights, House Lights, Set up. VJ \$250 additional. Second Sound rig available for an additional fee.

## The Family Room Plus Package



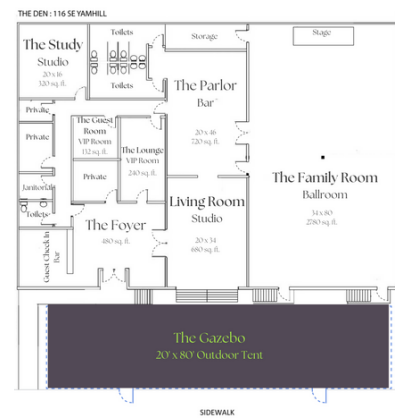
Suggested for shows with less than 400 anticipated guests. Comes with Sound/Light Engineer, House Manager, Bar Staff, Box Office, Coat Check, Security, L'Acoustics Sound System, House Lights. VJ \$250 additional. Second Sound rig not suggested. Choice of either green room.

## The Family Room Package



Suggested for shows with less than 350 guests. Comes with Sound/Light Engineer, on call House Manager, Bar Staff, Box Office, Security, L'Acoustics Sound System, House Lights. Second sound rig not suggested. Choice of either green room. Guest entrance through Ballroom.

## The Gazebo



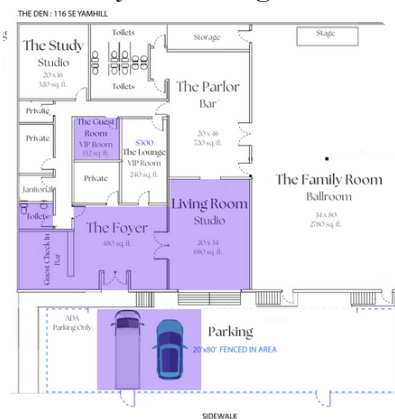
Add The Gazebo to increase capacity by 250 guests. Box office may be set up inside tent. A sound variance is required for all amplified sound, at the expense of the Promoter.

## The Living Room Plus Package



Suggested for shows with less than 225 anticipated guests. Only available within 30 days of event date (fill in for cancellations) or Sunday - Thursday. Comes with Set up, Security, Box Office, and Bar Staff. A Kv2 sound rig can be rented for an additional fee. Sound Engineering available starting at \$250. \*Can be modified by removing the Parlor for a discount.

## The Foyer Package



Suggested for shows with less than 125 guests. Only available if the Ballroom is also concurrently rented or available Sunday - Thursday. Comes with Set up, Security, and Bar Staff. A Kv2 sound rig can be rented for an additional fee. Sound Engineering available starting at \$250.

# FREQUENTLY ASKED QUESTIONS



## Deposits

Are deposits required to book my rental date?

Yes - we require a 50% deposit from standard clients or 25% from Nonprofits with a 501(c)3 designation to secure your event date.



## Parking

The Den is unique in that it has a 6-car parking lot. All show rentals have access to up to 5 seasonal parking spaces total, with the 6th left for ADA access. Use these spaces for easy vendor and infrastructure access.



## ADA Access

The Den is ADA accessible offering a low slope wheelchair ramp to our Foyer, a private ADA accommodating bathroom, and ADA stalls in the main baths. Service animals admitted with proper documentation. Note - the stage does not have an accessible ramp.



## Catering & Bar

The Den does not allow any outside food or drink and reserves the right to sell all concessions, beverages, and run a full bar. If you require anything special, we require orders to be made through our Hospitality Team at least 30 days in advance. The Den offers a fully staffed and licensed Hospitality staff so that we can offer your event a full bar, coat check, box office or VIP services.

Please review any performer riders with our Sales Manager.



## Alcohol

Oregon Liquor Control Commission (OLCC) regulations require that a licensed bartender dispense all alcoholic beverages. The Den adheres to all OLCC rules and regulations: asking for proper identification and does not serve visibly intoxicated guests. Guests are not permitted to bring their own alcoholic beverages or remove them from the premises.

All shows at The Den are 21 and over unless otherwise stipulated BEFORE the time of contract. No liquor is allowed to be brought into the Green Rooms without a Den Hospitality Server.



## Capacities

The total venue capacity at any one time is 525. This includes all guests, staff, and vendors. If you anticipate additional guests during your rental period exceeding the capacity of the space, advanced written approval must be obtained from The Den Management and your event is responsible for counting and controlling access and egress to your event. You can add our tented parking lot to increase capacity by 250 guests.



## Insurance

A certificate of event liability insurance providing \$1,000,000 per occurrence and naming Wild Animals, LLC, d.b.a. The Den as an additional insured, is required for all events two weeks before the event.



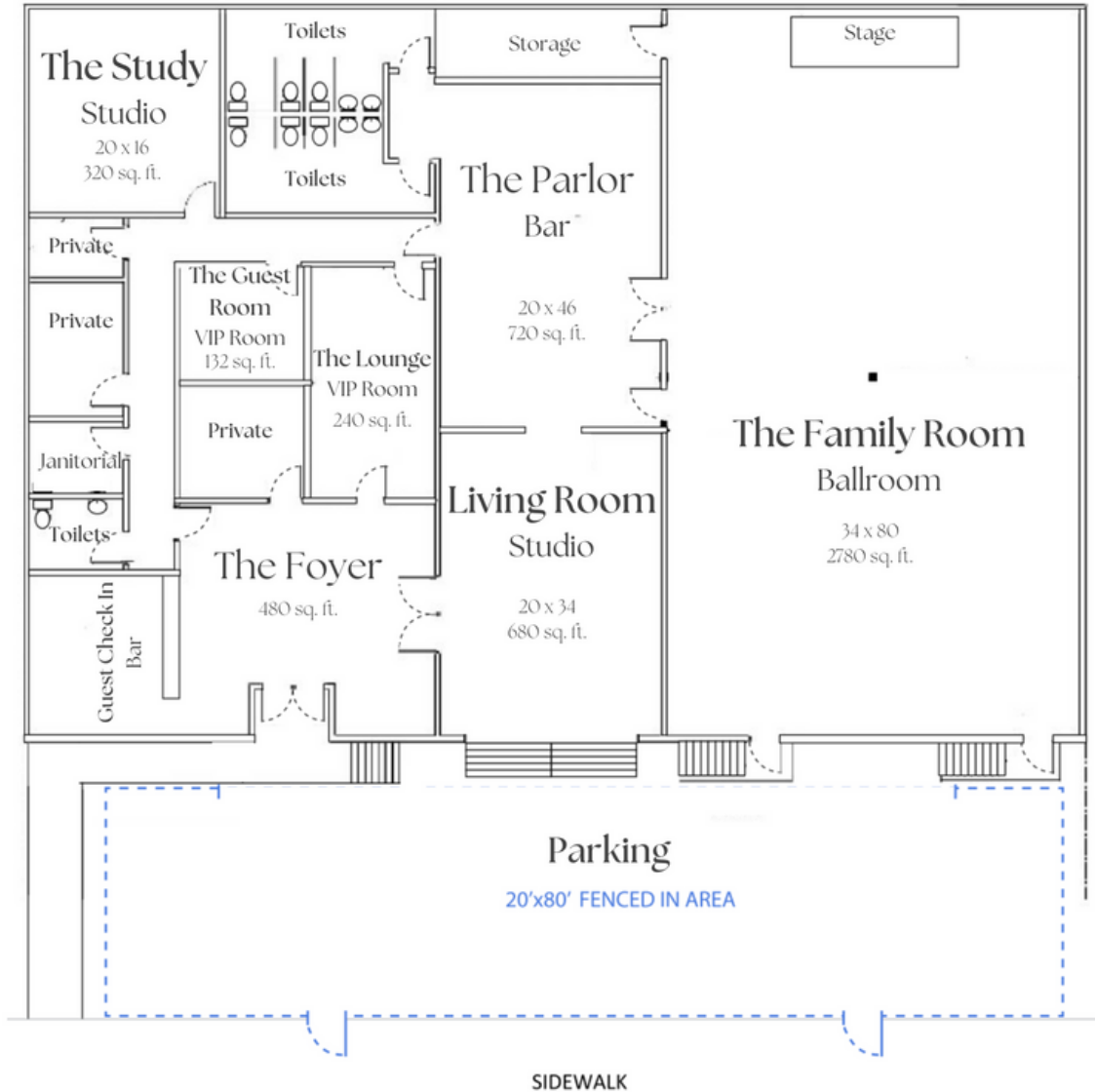
## Outside Vendors

Live entertainment and decorations are encouraged, and we'll help you find the perfect fit and recommend vendors. The Den will provide access to power access, but vendors are responsible for providing all of their own equipment, set-up, and tear-down.



## Rental Period

Shows are allocated a load in period of 4 hours before doors and have 2 hours immediately after show to clear out, including all decorations. Additional hours can be contracted at an hourly rate, depending on availability. Event times are for a period of 5 hours.



## NEXT STEPS



The Den's Management will schedule a call with you to go over your vision and technical specifications. Once your info is collected, we will prepare a formal proposal and schedule a walk through for you. If you accept the proposal, we'll get you under contract in a jiffy!



EventSales@TheDenPDX.com

www.TheDenPDX.com

@TheDenPortland

(503) 893-8177

*Thank you!*